

12 Barr Scott Drive

Table of Contents

- | [Property Details](#)
- | [Photo Gallery](#)
- | [Map](#)
- | [Contact For Inspection](#)

Property Details

12 Barr Scott Drive, LISMORE HEIGHTS



SOLD BY THE WAL MURRAY TEAM

3  **1**  **2** 

Located in Lismore Heights, this brick and tile home has an elevated outlook taking in the views to the hills and valleys to the north while capturing cooling summer breezes. Great location being close to bus route and less than 1km to Lismore Heights Primary School and local bowls club. The home has a spacious open plan living area with air-conditioning and bamboo flooring with this space beautifully flowing outdoors. Double sliding doors open out to the wrap around deck giving plenty of outdoor space to relax or entertain while taking in the views. The kitchen is modern white with island bench, stone tops plus stainless steel appliances.

- 3 Bedrooms
- 1 Bathroom
- 1 Toilet
- 2 Carports
- Air Conditioning
- Deck
- Outdoor Entertaining
- Built In Robes

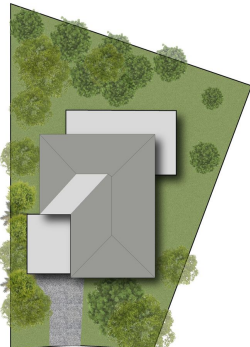
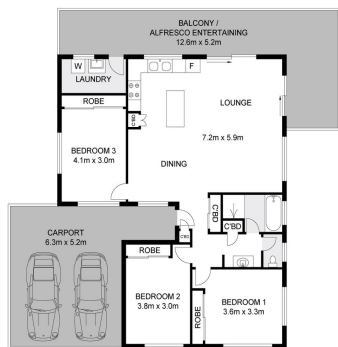
All 3 spacious bedrooms are carpeted and include built-in robes. The bathroom has been designed for family living with separate toilet, bath & shower area plus vanity. Outside the home is the fenced backyard with gates to side to allow vehicle access, ideal for the trailer or boat to be parked off-street. Space for the kids to play and being fenced makes the yard suitable for the family pet.

This home will suit many buyers and the location is great for the young family. Call today.

\$439,000

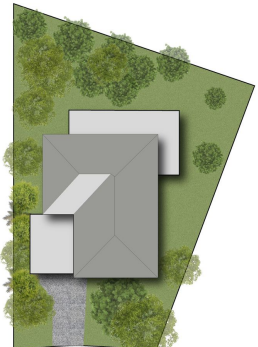
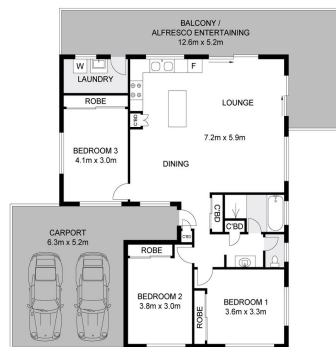
Photo Gallery





0 1 2 3 4 5
Scale in meters, indicative only. Dimensions are approximate. All information contained herein gathered from sources as believed to be reliable. However we cannot guarantee its accuracy and interested persons should rely on their own enquiries. © copyright media vision 2020.
INT : 106.2m²
EXT : 33.2m²
CARPORT : 35.9m²
first national
Wal Murray & Co

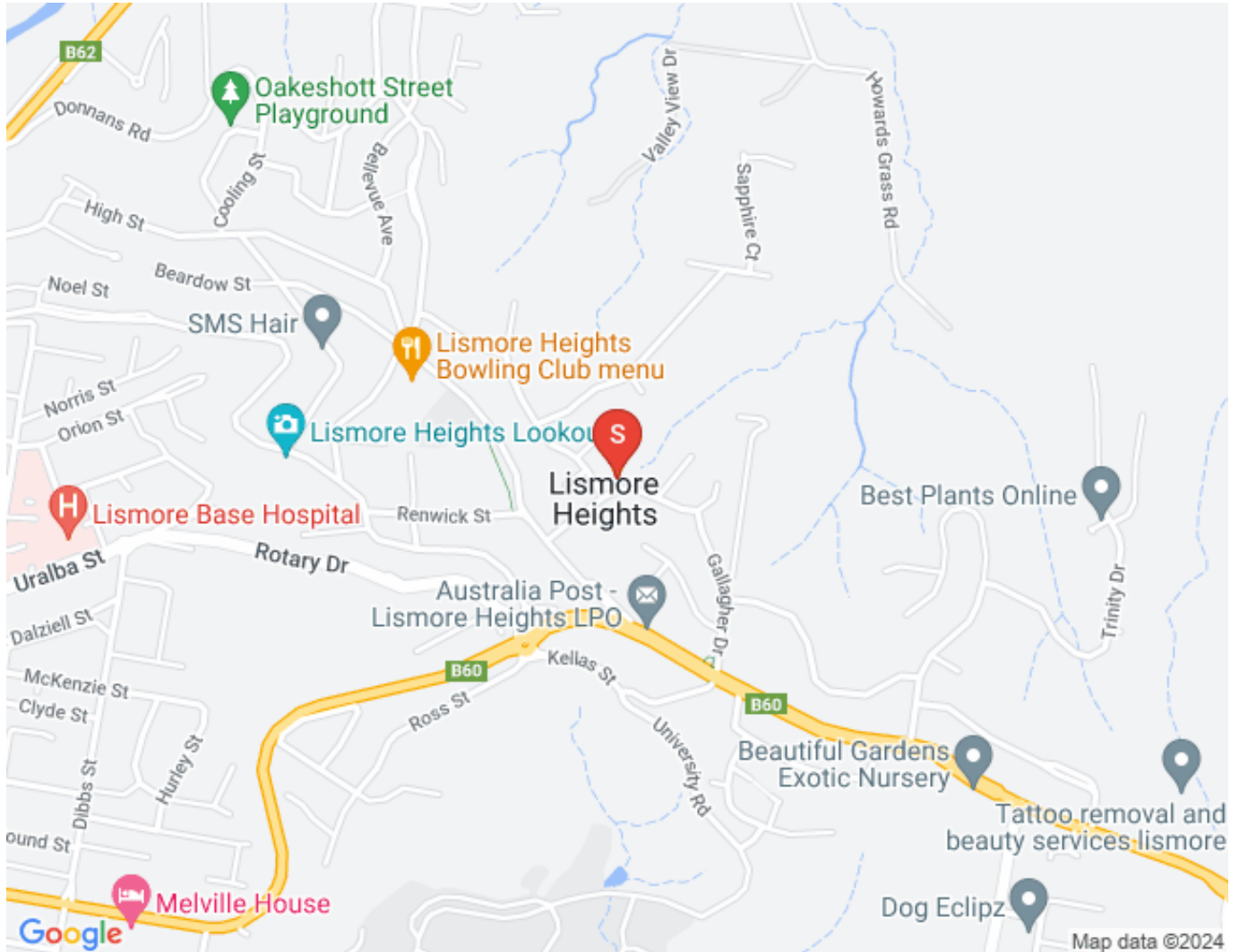
12 Barr Scott Drive, Lismore Heights



0 1 2 3 4 5
Scale in meters, indicative only. Dimensions are approximate. All information contained herein gathered from sources as believed to be reliable. However we cannot guarantee its accuracy and interested persons should rely on their own enquiries. © copyright media vision 2020.
INT : 106.2m²
EXT : 33.2m²
CARPORT : 35.9m²
first national
Wal Murray & Co

12 Barr Scott Drive, Lismore Heights

Map



Contact For Inspection



BENJAMIN CONTE

LICENSED REAL ESTATE AGENT

0408 368 913

ben@walmurray.com.au